

TABLE OF CONTENTS

OCT. 5: 1 KINGS 14:21–16:34	2
HOW DO I DEAL WITH EVILNESS?	
OCT. 12: 1 KINGS 17–22	6
WHY IS GOD WORTHY OF WORSHIP?	
OCT. 19: 2 KINGS 1:1–6:7	11
GOD DOES GREAT THROUGH ME?	
OCT. 26: 2 KINGS 6:8–10:36	16
WHY DO I STRUGGLE WITH TRUSTING GOD?	

OCTOBER 2008

TEACHING PLANS

AN EXPLORATION OF THE BOOKS OF 1 AND 2 KINGS

TELL ME THE STORY AGAIN...

This issue we're going old school—way back to the first part of the Old Testament. Not sure what your students remember about all the kings (and queen)? You're going to have the opportunity to introduce or reacquaint them with some amazing stories. If this is the first time they're digging into the Scriptures of the OT, they are in for a drama-filled treat—and an opportunity to discover a lot about wisdom, obedience, and knowing God in a deeper way.

WHAT'S OLD IS NEW...

With this quarter, we have redesigned the *Collegiate* online features, bringing you a more structured teaching plan with additional helps and more relevant questions to equip you to lead a strong discussion-based lesson. The same sections are here: *Getting Started* helps introduce the topic and get your students engaged in the lesson. *Explore the Bible* leads them through the Scripture passages of the lesson, helping them understand the text, its historical and cultural context, and what it means to them today. *Apply to Life* gives you ideas for furthering the application of the Scripture, so students can take active steps to process what they're learning and how it impacts their lives. Be sure you also utilize the commentary provided (threadsmedia.com/collegiate) to help with your preparation and personal study of the lessons.

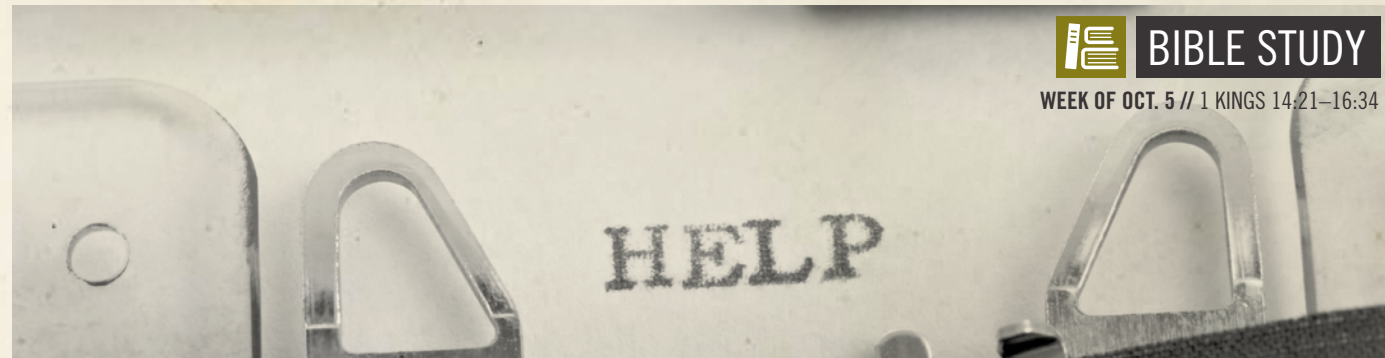
Of course, we know our work is not done. All things can be improved and we are anxious to know what you think of the new *Collegiate*. So please send us your questions, thoughts, and suggestions. Let us know what we could do better and how these teaching plans could be even more relevant to your students and your ministry.

Waiting to hear from you,

Valerie Hancock
editor in chief of Threads
valerie.hancock@threadsmedia.com

70 sheets/college ruled
11x8½in/27.9x21.5cm

notebook



THIS WEEK YOU'LL NEED

- A COPY OF THIS LEADER GUIDE
- YOUR *COLLEGIATE* MAGAZINE
- YOUR PERSONAL DECISION-MAKING LOG AND A REWARD FOR YOUR GROUP MEMBER, IF YOU PICKED THIS “APPLY TO LIFE” OPTION LAST WEEK.
- THE SONG “TROUBLE OF THE WORLD” BY KEVIN MAX, FROM THE ALBUM *THE BLOOD*, TO PLAY FOR THE CLASS AS THEY ARRIVE.

NEED TO KNOWS

CHARACTERS

REHOBOAM—Solomon's son; King of Israel after Solomon's death and became king of Judah (Southern Kingdom) after the kingdom split. Ruled from c. 975-958 B.C.¹

ASA—Third king of Judah; worked to remove idolatry and its immoralities from the land and maintain the true worship of God. Ruled from c. 956-916 B.C.

HISTORICAL CONTEXT

“In 1 Kings 14–16 we see a great contrast between two kings. Rehoboam allowed and participated in the social evils of the day, while Asa cleansed the nation of its sinful practices when he took over the throne.”—from page 34 of *Collegiate Magazine*

FOCAL PASSAGES

1 KINGS 14:21–16:34; 2 CHRONICLES 12–16

KEY VERSES

1 KINGS 14:22

1 KINGS 15:11

For an article that looks at modern idolatry, refer to “Snakes on a Pole,” on page 26 of your *Collegiate magazine*.

¹For more background information, refer to *Holman Illustrated Bible Dictionary*, ed. Chad Brand, Charles Draper, and Archie England (Nashville: Holman Bible Publishers, 2003).

HOW DO I DEAL WITH EVILNESS?

GETTING STARTED

Have the song “Trouble of the World” by Kevin Max playing in the background as students arrive.

Begin today by asking students to consider their culture at large by discussing the seemingly evolving issue of evil. Engage them with these questions:

- What are some arenas in which you have heard the use of the word “evil”?
- Do you think our culture believes in the reality of evil? Why or why not?
- If not, what has replaced the concept of evil?
- How do you see the ambiguous idea of evil working itself out in areas of pop culture, education, and entertainment?

Lead discussion on the appropriate Christian response to this mind-set.

- How can a Christian stand against evil when evil is not a concept embraced by society?
- How does the idea of tolerance relate to this one?
- How does the Christian live a godly life in the middle of evil?

Draw the discussion to a close by pointing out that according to the Bible, evil is a reality that must be contended with.

The passages from 1 Kings and 2 Chronicles point out this reality and both the failure and consequences of doing nothing against it. The text also reveals the extreme pressure that comes to a person when they desire to stand for good in the world. The question remains, though, of how.



THIS WEEK YOU'LL NEED

- A COPY OF THIS LEADER GUIDE
- YOUR *COLLEGIATE* MAGAZINE
- THE SONGS “HE IS EXALTED” BY SHANE & SHANE, FROM THE ALBUM *CLEAN*, AND “HOLY” BY NICHOLE NORDEMAN, FROM THE ALBUM *WOVEN & SPUN*, TO PLAY FOR THE CLASS AS THEY ARRIVE.

NEED TO KNOWS

CHARACTERS

ELIJAH—A prophet from the 9th century B.C. His name means “my God is Jehovah,” and he was taken up to heaven without dying.

AHAB—The seventh king of Israel and husband to Jezebel. He introduced Baal worship to the nation of Israel.

OBADIAH—Head of Ahab’s household. He worshipped Yahweh and hid more than 100 of the Lord’s prophets from Jezebel’s persecution.

PROPHETS OF BAAL—Prophets of the Canaanite god Baal. There were 450 of them at Mount Carmel for the confrontation with Elijah and Yahweh.

HISTORICAL CONTEXT

A Baal temple was being built in Samaria and Yahweh’s prophets were being persecuted when Elijah began prophesying. As Israelites settled in the land of Canaan they were tempted with the worship of Baal. The encounter between Elijah and the prophets of Baal on Mount Carmel proved that Yahweh was the one true God, and you could not worship Him with any other gods.

FOCAL PASSAGES

1 KINGS 17–22; 2 CHRONICLES 17–20

KEY VERSES

1 KINGS 18:36–39

WHY IS GOD WORTHY OF WORSHIP?

GETTING STARTED

Have the songs “He is Exalted” by Shane & Shane, and “Holy” by Nichole Nordeman playing in the background as students arrive.

After students arrive, show a clip from the *Planet Earth* series by the Discovery Channel. Discuss the power of God in all of nature. Then engage them in a discussion about the relationship of God to His creation.

- What does nature reveal to us about God?
- What can be gained spiritually from spending time in nature?
- What cannot be revealed about God from nature?
- What is the appropriate response to nature from the Christ follower?

As Christians we have an obligation to care for God’s creation, as Adam was instructed to do. But beyond that, one of the most appropriate Christian responses to nature is wonder and worship. That’s not to say we are to worship nature; it is, however, to say that by observing nature we can see the absolute power and might of the One who created and lords over it. This wonder, respect, and awe for God can sometimes be lost, especially when we become familiar with “spiritual experiences.”

DIG DEEPER

Found on page 35 of *Collegiate* magazine:

Baal—“lord, husband, owner.” This was the predominant god in Canaanite religion. It was also considered the storm god who provided the rain for the fertility of the land.

Take a look at the International Mission Board, *imb.org*, and discover the power of God at work in nations around the world. Also, look at *thetask.org* and see how you can be personally involved.

For an article that discusses your global responsibility and ways to worship God through serving others, refer to “Where’s the Justice: Looking Beyond Yourself to Impact the World,” on page 14 of your *Collegiate* magazine.



GOD DOES GREAT THROUGH ME?

GETTING STARTED

Have the song “Little Is Much” by downhere playing in the background as students arrive.

When students arrive, distribute pens and paper. Direct them to write out a dream they have for their lives. This dream could be something they want to see happen much later in life, or something they hope to see sooner rather than later. Then instruct students to write what may hinder them from seeing their dreams accomplished.

Now ask them if they’ve ever considered that God might also have a dream for their lives. Ask them to write down what that might be, or why they have trouble knowing what it is.

Lead in prayer. Pray that students would have the wisdom from God to trust Him to use their lives for His purposes. Pray that He would reveal the dreams He has for them and that students would have the courage to pursue Him.

DIG DEEPER

Found on page 36 of *Collegiate* magazine:

“LIFE IS EITHER A DARING ADVENTURE OR NOTHING. SECURITY DOES NOT EXIST IN NATURE, NOR DO THE CHILDREN OF MEN AS A WHOLE EXPERIENCE IT. AVOIDING DANGER IS NO SAFER IN THE LONG RUN THAN EXPOSURE.” —HELEN KELLER

Consider reading a brief excerpt from one of these books for encouragement as they allow God to use them for His purposes:

- *A Chance to Die: The Life and Legacy of Amy Carmichael*, by Elisabeth Elliot
- *Fresh Wind, Fresh Fire*, by Jim Cymbala
- *Loving God*, by Chuck Colson

THIS WEEK YOU’LL NEED

- A COPY OF THIS LEADER GUIDE
- YOUR *COLLEGIATE* MAGAZINE
- THE SONG “LITTLE IS MUCH” BY DOWNHERE, FROM THE ALBUM *WIDE-EYED AND MYSTIFIED*, TO PLAY FOR THE CLASS AS THEY ARRIVE.

NEED TO KNOWS

CHARACTERS

ELISHA—A prophet from the 9th century B.C. who succeeded Elijah. His name means “my God is my salvation.”

SHUNAMMITE WOMAN—Shunem was a town located southeast of Mount Carmel. The woman was barren but God gave her a son after she showed hospitality to Elisha. Elisha later raised her son from the dead.

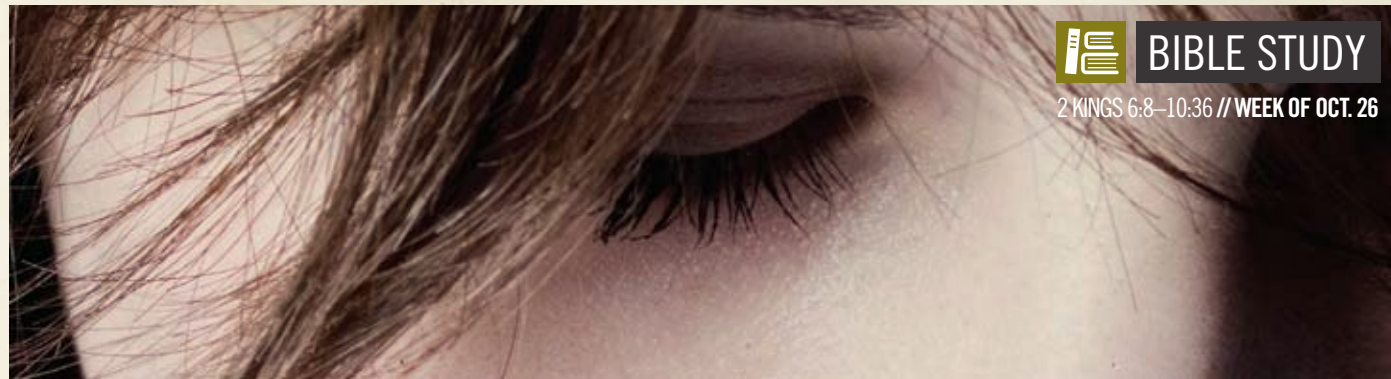
GEHAZI—Elisha’s servant. Elisha sent him ahead to raise the Shunammite woman’s son from the dead, but he was unable to do so.

FOCAL PASSAGES

2 KINGS 1:1–4:44

KEY VERSES

2 KINGS 4:32–35



THIS WEEK YOU'LL NEED

- A COPY OF THIS LEADER GUIDE
- YOUR COLLEGIATE MAGAZINE

NEED TO KNOWS

CHARACTERS

ELISHA—A prophet from the 9th century B.C. who succeeded Elijah. His name means “my God is my salvation.”

NAAMAN—A Syrian general whom Elisha cured of leprosy. After he was cured he professed faith in the God of Israel.

SHUNAMMITE WOMAN—This is the same woman from the previous lesson. Because of her testimony about her son, the king restored her land after the famine.

HISTORICAL CONTEXT

THE ARAMEAN WAR—The Arameans were an alliance of several towns across Syria and Babylon. Each group lived separately except during wartime. The Old Testament records several confrontations between Israel and the Arameans, including the one in 2 Kings 6–7. The Arameans descended from Shem, Noah’s son.

FOCAL PASSAGES

2 KINGS 5:1–10:36; 2 CHRONICLES 21:1–22:8

KEY VERSES

2 KINGS 5:13-14
2 KINGS 6:16-17
2 KINGS 8:6

WHY DO I STRUGGLE WITH TRUSTING GOD?

GETTING STARTED

As students arrive, ask them to give you any \$1 bills they may have in their possession. In order to return the money after the activity, record names of students and amounts of money they gave you. If students inquire why you want the money or what you are going to do with it, tell them they must trust you. As you begin the session, count the number of one-dollar bills you have. Explain that you have been entrusted with their money and have made a list of exactly how much each person has given.

- What would happen if I destroy the list? Would you still trust me?
- How difficult was it for you to trust me with your money?
- What is an important phrase on the back of the dollar bill? (In God we trust.)
- Do you think everyone who handles a dollar bill today really lives that motto?
- Do you live by “In God we trust”?

Explain that today’s session is about trusting God through everything, even when we don’t understand His purpose or when we face fearful situations.

OPTION: Show a clip of the movie *Return to Me*. Discuss the elements of trust within the story line.

DIG DEEPER

Found on page 37 of *Collegiate* magazine:

Proverbs 3:5-6

“Trust in the LORD with all your heart, and do not rely on your own understanding; think about Him in all your ways, and He will guide you on the right paths.”

Hebrews 11:6

“Now without faith it is impossible to please God, for the one who draws near to Him must believe that He exists and rewards those who seek Him.”

Consider reading a brief excerpt from one of these books to help students understand what struggling to trust God in the reality of their day-to-day lives looks like:

- *Own Your Faith: The Adventure of Following Christ in College*, by Mark Tabb
- *Safer Than a Known Way*, by Pamela Rosewell Moore

